



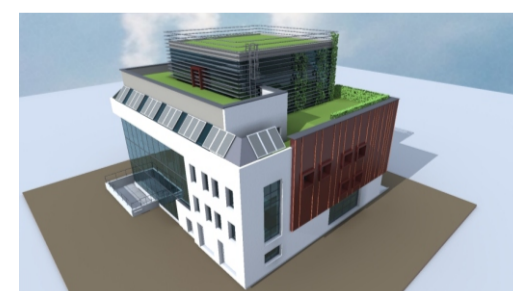
ENVIRONMENTAL PROTECTION AGENCY SIBIU VIORICA CERGĂ



A green way to sustainable development RO07 – Adaptation to climate change

Project output

- ✓ 300 staff educated and trained on adaptation to climate change;
- ✓ training module regarding the adaptation to climate change for students and a post graduate course for specialists;
- ✓ 1 campaign of information and awareness at local level or regional;
- ✓ 4 meteorological studies
- ✓ 3 municipalities with strategies, action plans regarding adaptation to climate change
- ✓ 6 guides on adaptation climatic change
- ✓ 10.019 line meters of infrastructure for placing electric cables/of telecommunications underground installed in Sibiu Municipality, ✓ 30 planted trees in bus stops in Sibiu, 1 traffic study regarding the assessment of the traffic efficiency and of alternative routes in situations of extreme phenomena in Sibiu
- ✓ 1 building of a public institution (EPA Sibiu) adapted to climate change where energetic efficiency measures will be also implemented
- ✓ 1 kindergarten that benefits from energy efficiency measures



Partnership:

Norway: The Norwegian Association of Local and Regional Authorities – KS

Romania: National Meteorological Administration, Sibiu City Hall, Tg. Mures City Hall, Braşov City Hall, "Lucian Blaga" University of Sibiu.

Programme Operator: The Ministry of Environment, Water and Forest

Total budget of the project: 4.546.115,00 euro



<http://caleaverde.ro>
<https://www.facebook.com/CaleaVerde>



MINISTERUL MEDIULUI,
APELOR ŞI PĂDURILOR